



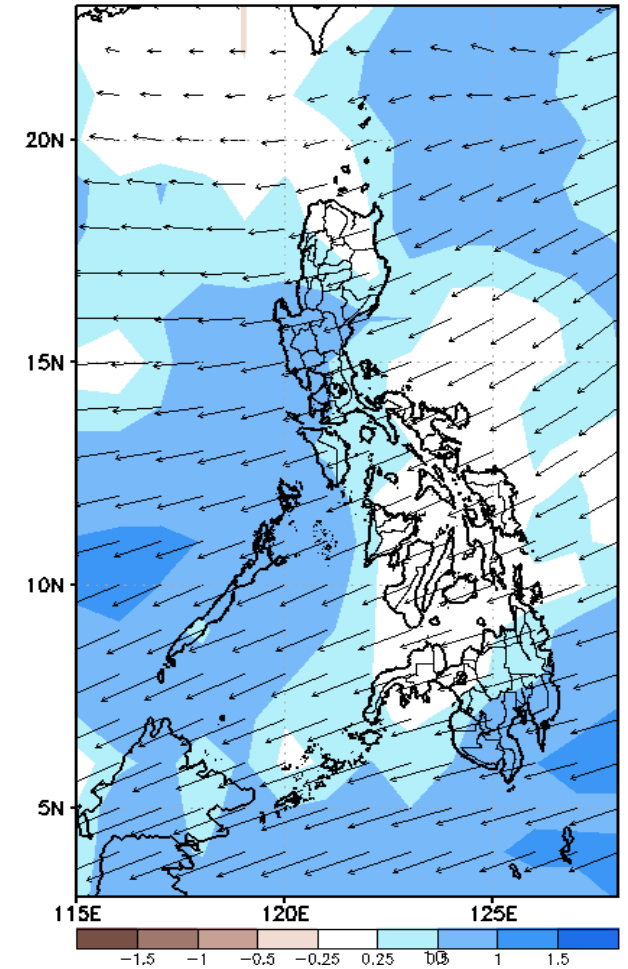
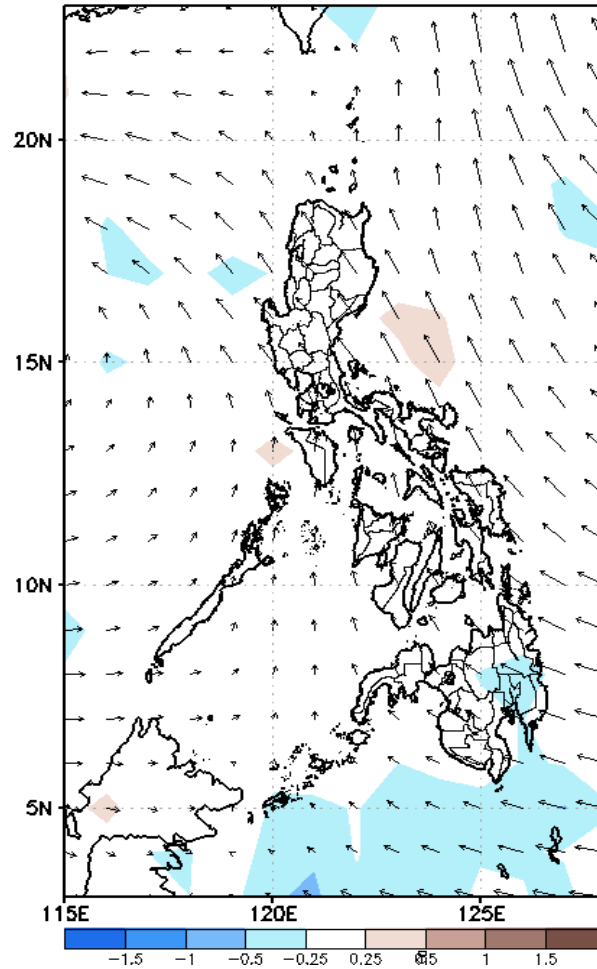
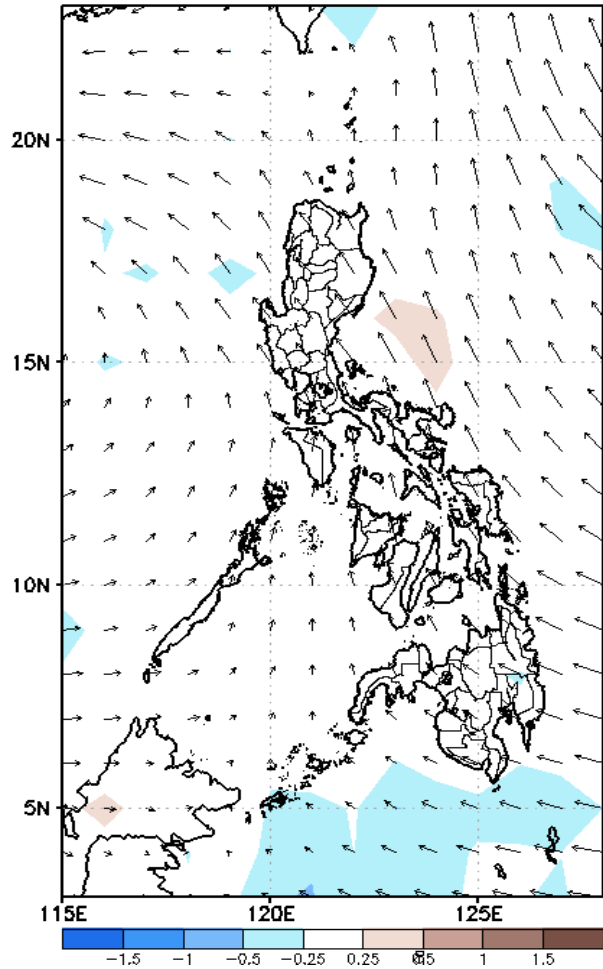
Week 1 & Week 2 Forecast for the Philippines using GEFS Model



GEFS Week-1 Forecasts: Divergence & Wind Anomaly

Week 1: Sep 08-14, 2021

GEFS Week-1 850-hPa Divergence and Wind Anomaly GEFS Week-1 700-hPa Divergence and Wind Anomaly GEFS Week-1 200-hPa Divergence and Wind Anomaly
Valid: 20210908 - 20210914 Valid: 20210908 - 20210914 Valid: 20210908 - 20210914

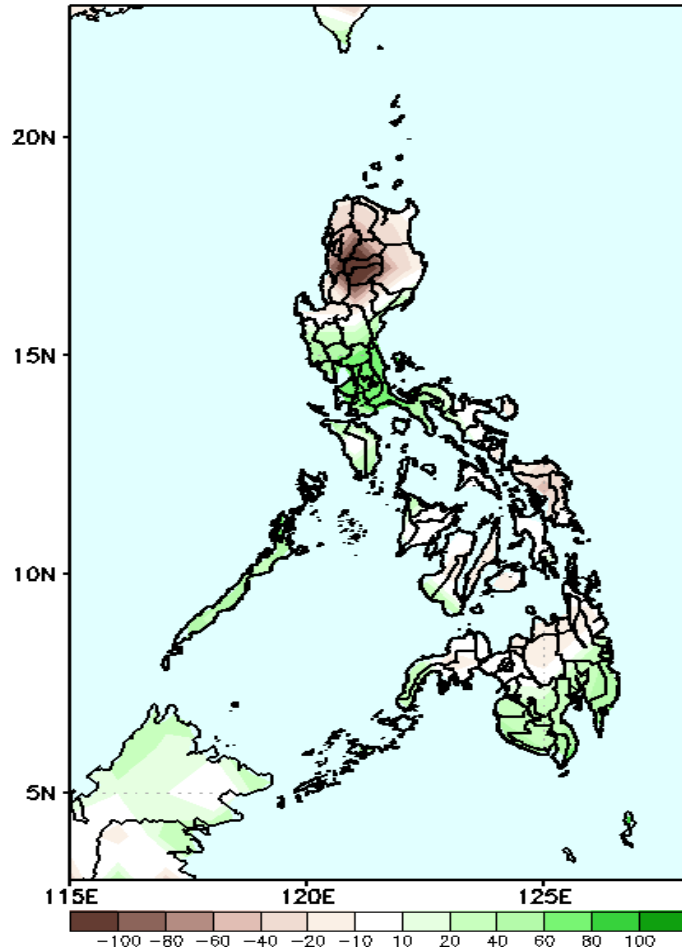


Upper and low level Divergence suggest likelihood of precipitation in most parts of the country. Southwest monsoon affecting the western sections of the country attributing to light and moderate rains in the area. Easterlies affecting the remaining parts of the country during the forecast period.

Precipitation Anomaly and Exceedance Probability > 25/50 mm

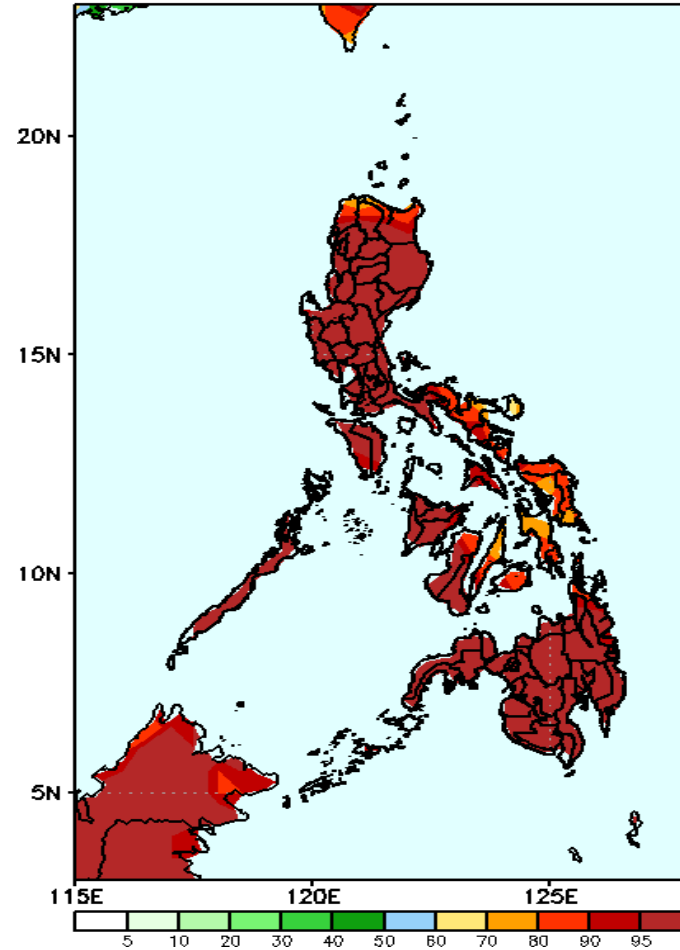
Week 1: Sep 08-14, 2021

GEFS Week-1 Precip Anomaly
Valid: 20210908 - 20210914



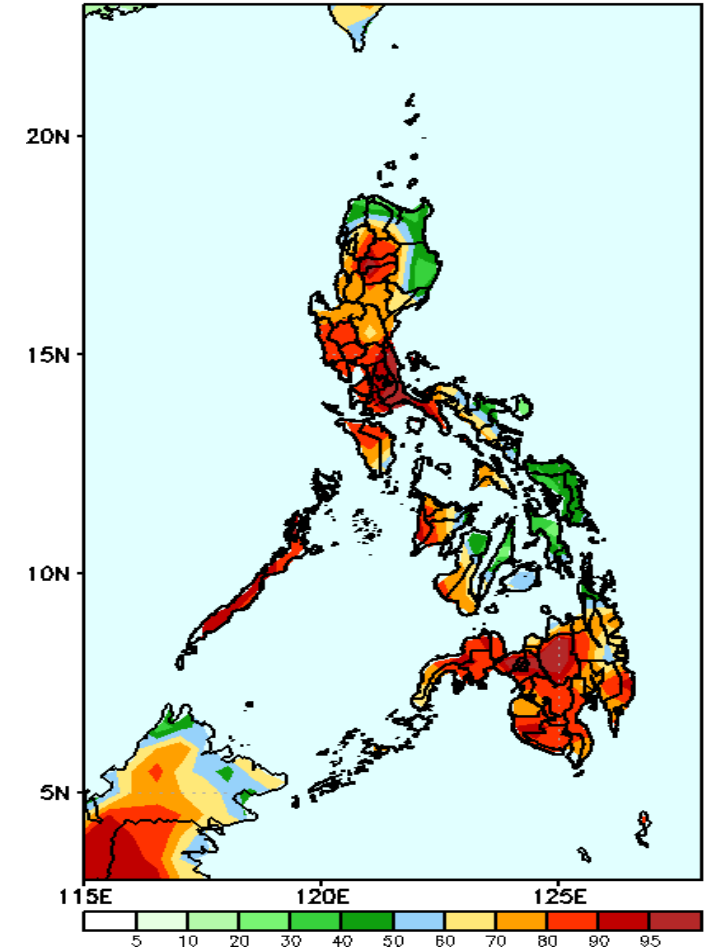
Rainfall deficit of 60-100mm is expected in Ilocos & Cordillera Region while increase of rainfall of 40-100mm in Central Luzon, Region 4A & B and southern Mindanao during the forecast period.

GEFS Week-1 Exceedance Prob. > 25mm
Valid: 20210908 - 20210914



High probability of rainfall to exceed 25mm in most parts of the country is expected during the forecast period.

GEFS Week-1 Exceedance Prob. > 50mm
Valid: 20210908 - 20210914

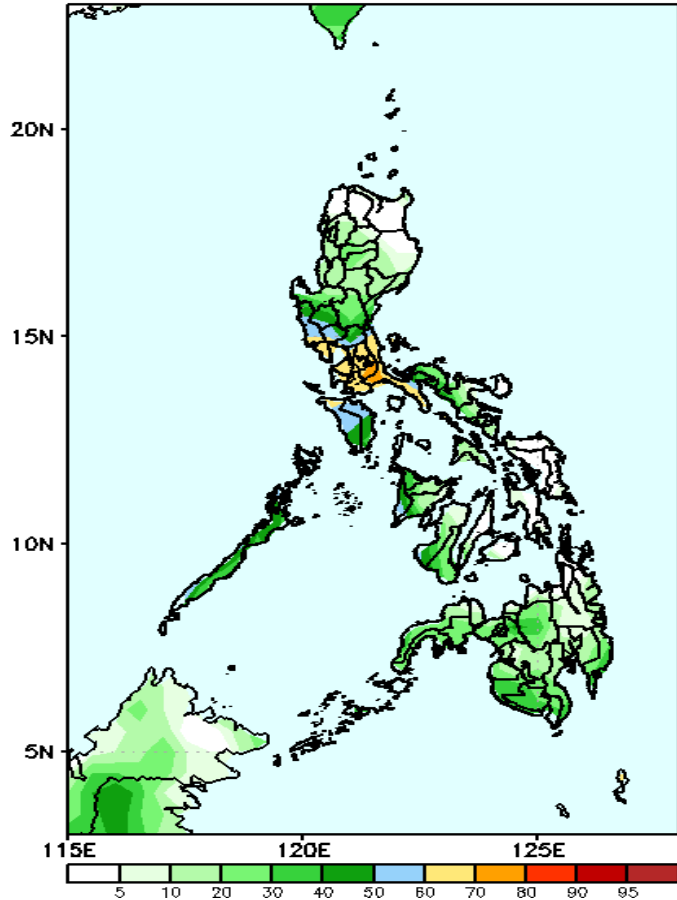


High probability of rainfall to exceed 50mm in most parts of the country except in Ilocos Norte, Apayao, Cagayan, Isabela and in Eastern and Central Visayas during the forecast period.

Exceedance Probability > 100/150/200 mm

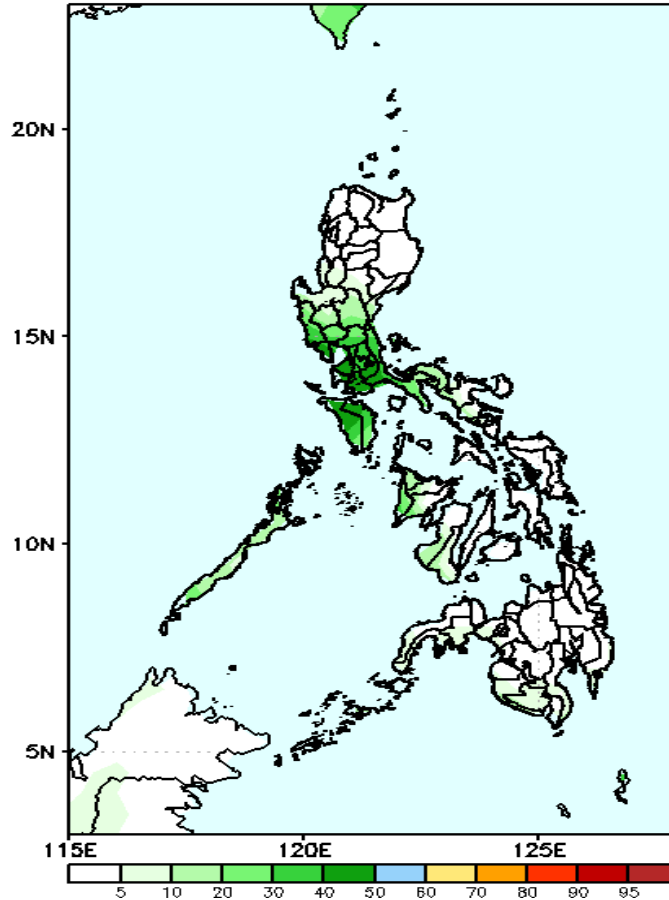
Week 1: Sep 08-14, 2021

GEFS Week-1 Exceedance Prob. > 100mm
Valid: 20210908 - 20210914



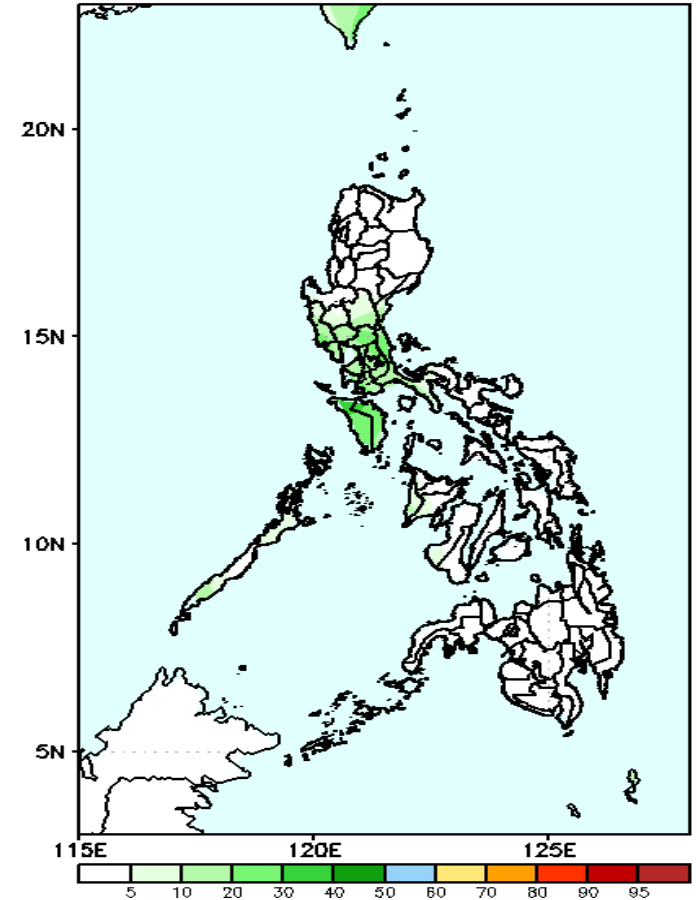
Less probability of rainfall to exceed 100mm in most parts of the country is expected except in CALABARZON where there is 60-90% chance during the forecast period.

GEFS Week-1 Exceedance Prob. > 150mm
Valid: 20210908 - 20210914



Less probability of rainfall to exceed 150mm in most parts of the country is expected during the forecast period.

GEFS Week-1 Exceedance Prob. > 200mm
Valid: 20210908 - 20210914



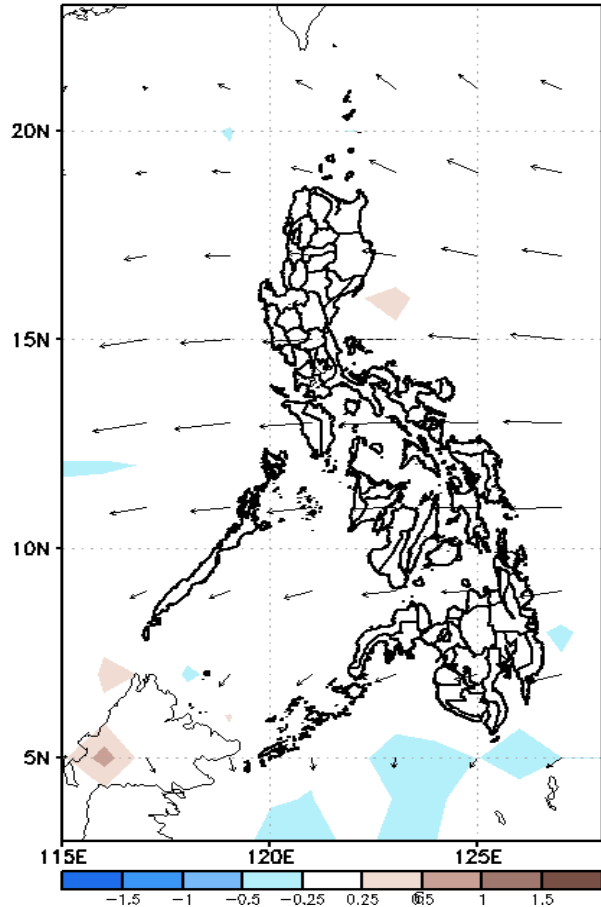
Less probability of rainfall to exceed 200mm in most parts of the country is expected during the forecast period.



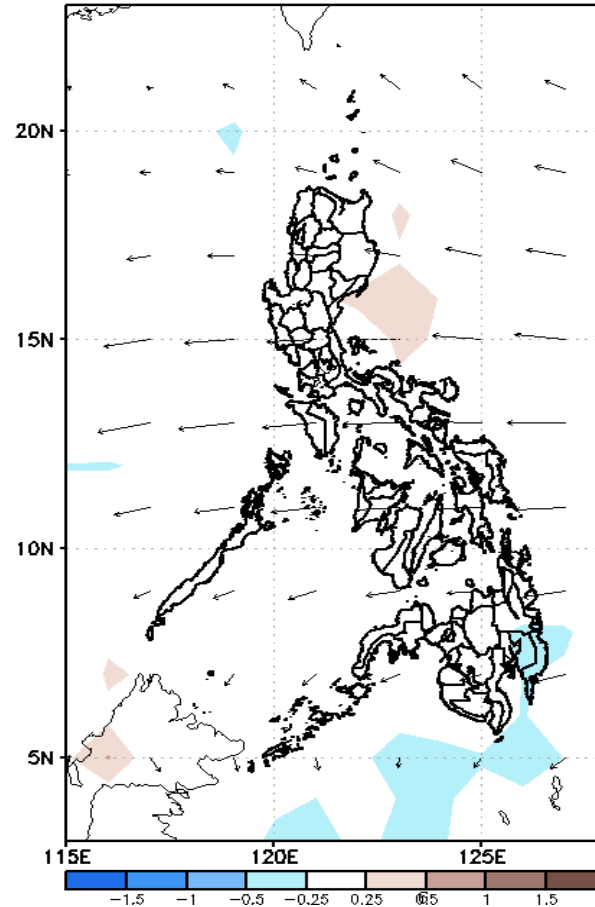
GEFS Week-2 Forecasts: Divergence & Wind Anomaly

Week 2: Sep 15-21, 2021

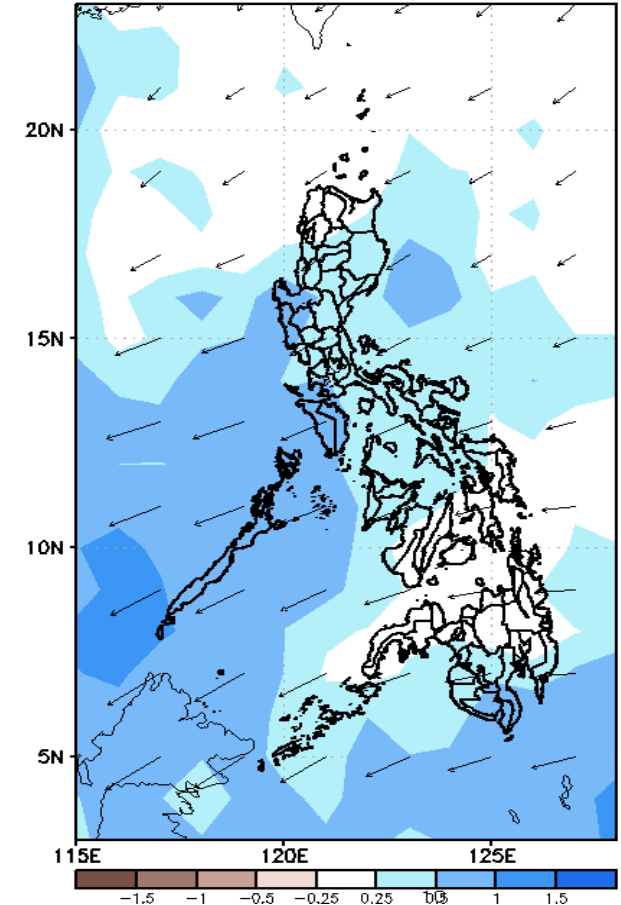
GEFS Week-2 850-hPa Divergence and Wind Anomaly
Valid: 20210915 - 20210921



GEFS Week-2 700-hPa Divergence and Wind Anomaly
Valid: 20210915 - 20210921



GEFS week-2 200-hPa Divergence and Wind Anomaly
Valid: 20210915 - 20210921

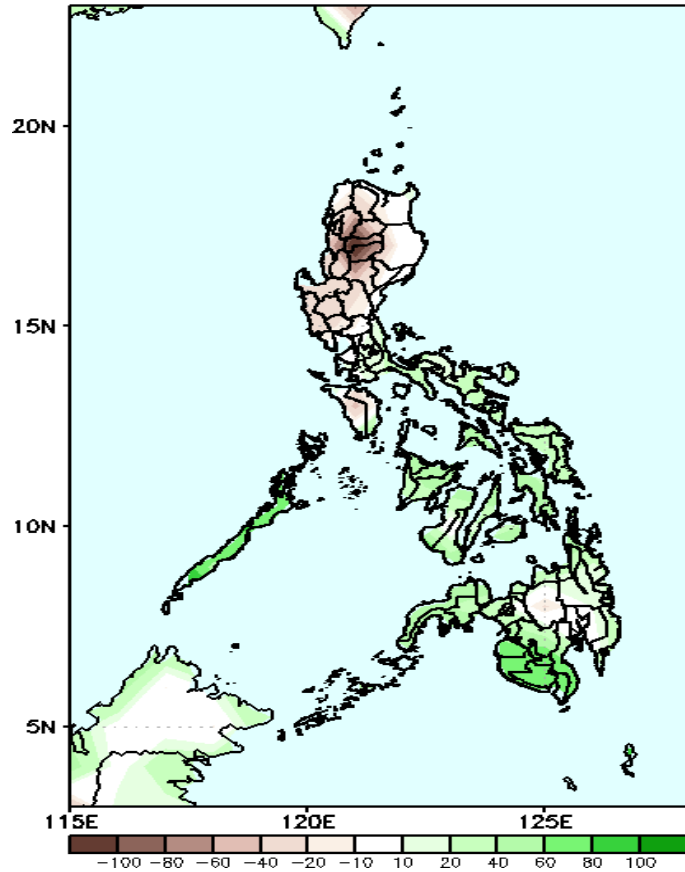


Upper and low level Divergence suggest likelihood of precipitation in most parts of the country except Ilocos Norte, Apayao, Eastern and Central Visayas, Northern Mindanao and Zamboanga peninsula. Southwest monsoon affecting the western sections of the country attributing to light and moderate rains in the area. Easterlies affecting the remaining parts of the country during the forecast period

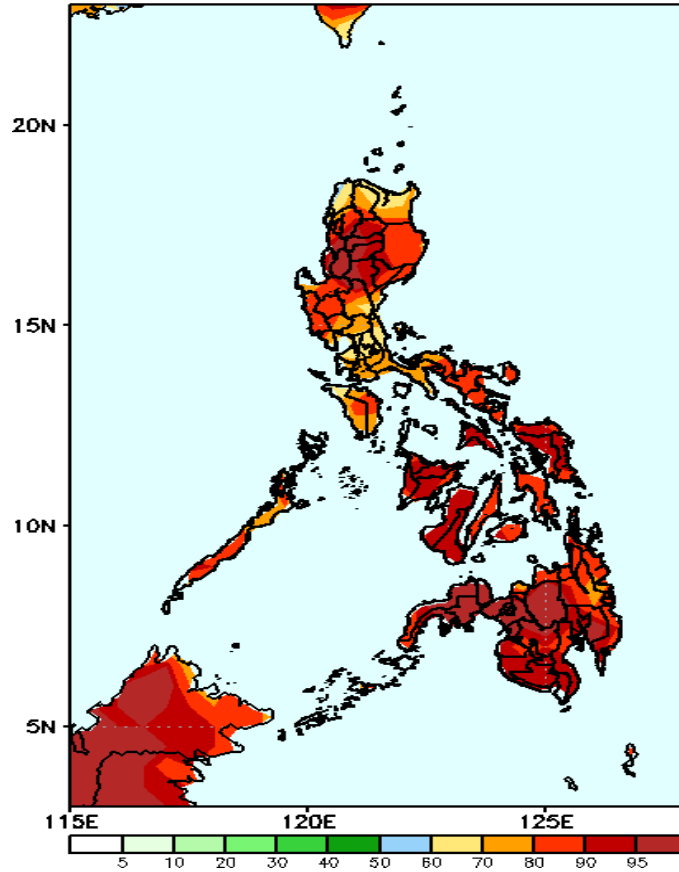
Precipitation Anomaly and Exceedance Probability > 25/50 mm

Week 2: Sep 15-21, 2021

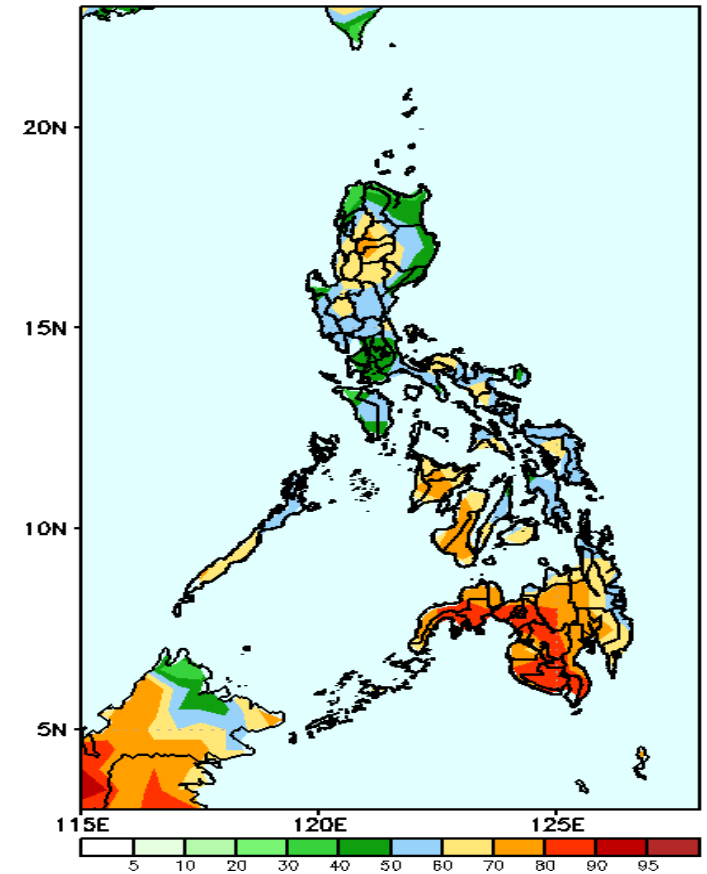
GEFS Week-2 Precip Anomaly
Valid: 20210915 - 20210921



GEFS Week-2 Exceedance Prob. > 25mm
Valid: 20210915 - 20210921



GEFS Week-2 Exceedance Prob. > 50mm
Valid: 20210915 - 20210921



Increase of rainfall of 60-100mm is expected in most parts of Visayas and western Mindanao while 40-100mm rainfall deficit in Cordillera Region during the forecast period.

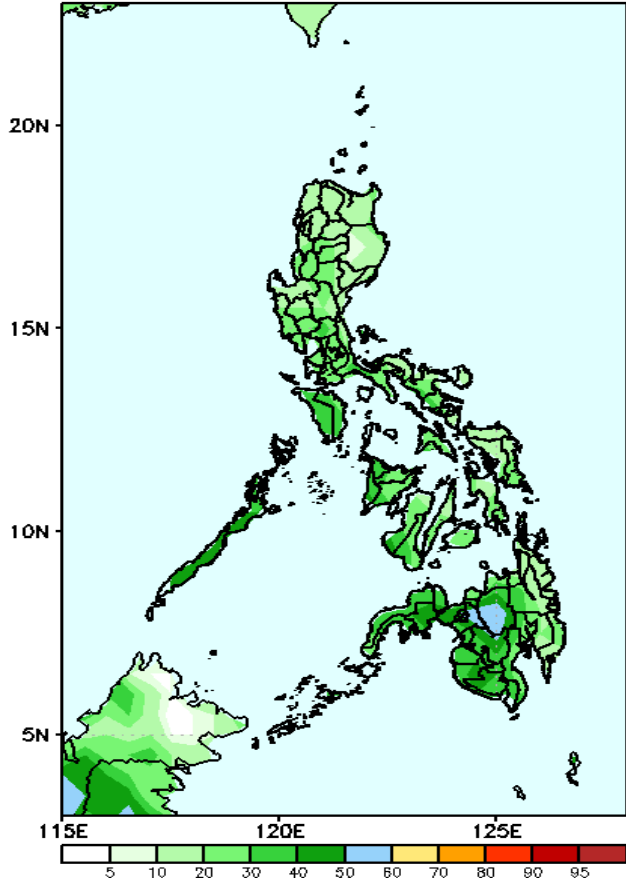
High probability of rainfall to exceed 25mm in most parts of the country is expected during the forecast period

High probability of rainfall to exceed 50mm in Cordillera Region, western Visayas and most parts of Mindanao while less likely for the rest of the country during the forecast period.

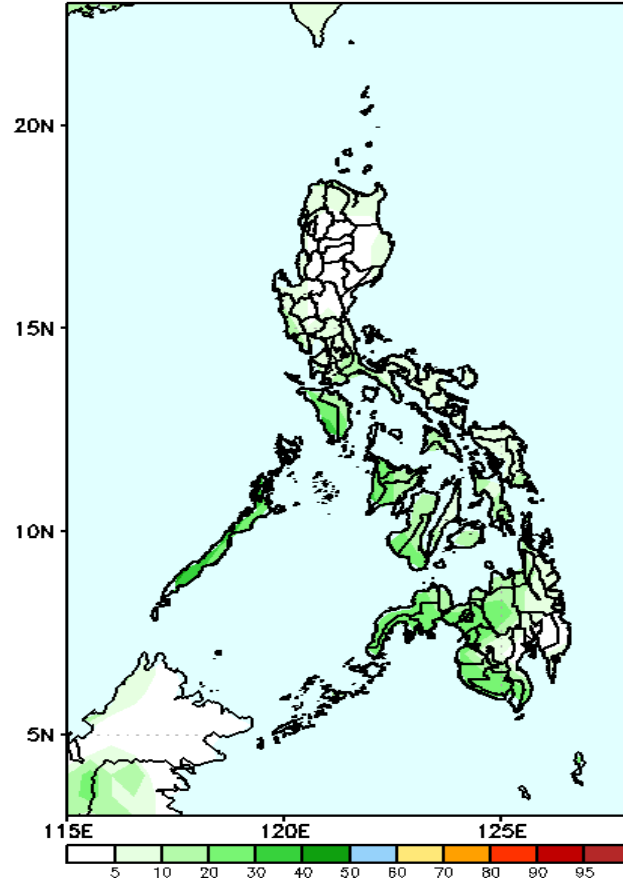
Exceedance Probability > 100/150/200 mm

Week 2: Sep 15-21, 2021

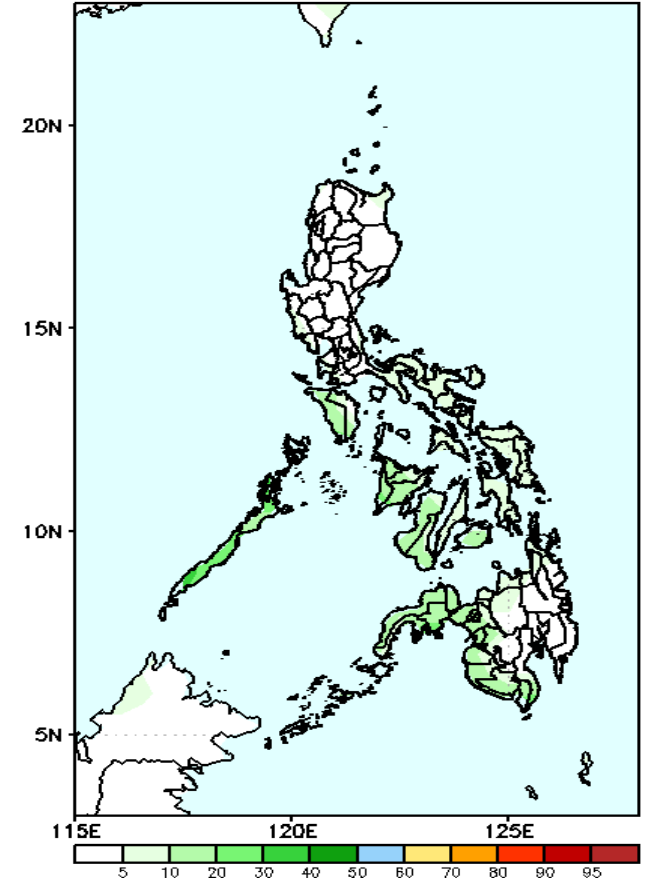
GEFS Week-2 Exceedance Prob. > 100mm
Valid: 20210915 - 20210921



GEFS Week-2 Exceedance Prob. > 150mm
Valid: 20210915 - 20210921



GEFS Week-2 Exceedance Prob. > 200mm
Valid: 20210915 - 20210921



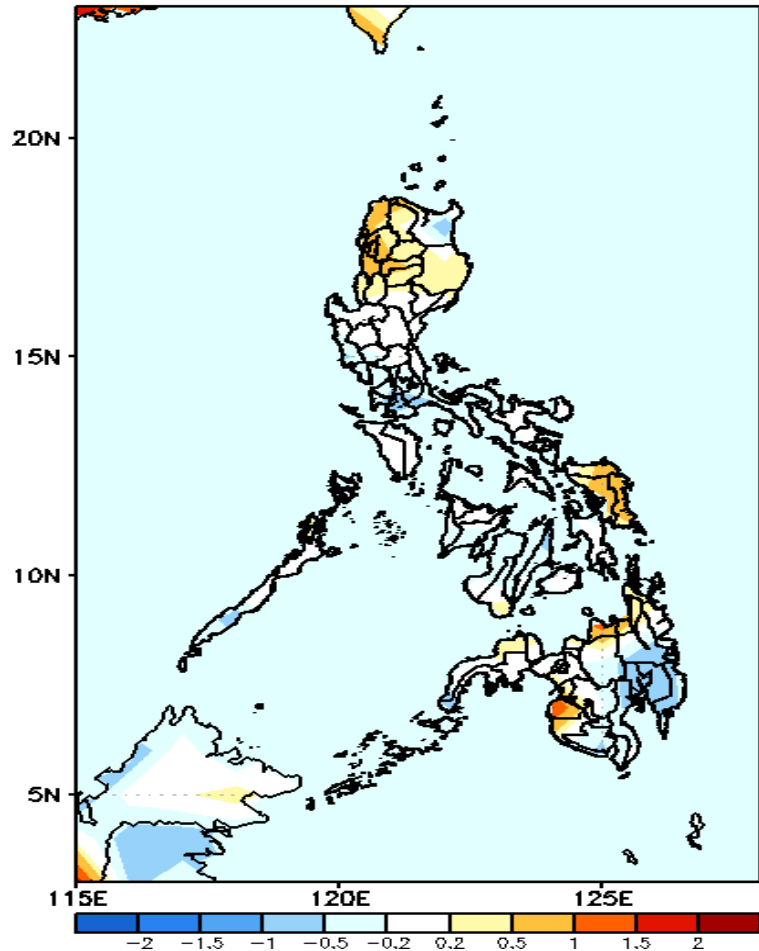
Less probability of rainfall to exceed 100mm in most parts of the country is expected during the forecast period.

Less probability of rainfall to exceed 150mm in most parts of the country is expected during the forecast period.

Less probability of rainfall to exceed 200mm in most parts of the country is expected during the forecast period.

GEFS Week-1 & 2 Forecasts: T2m Anomaly

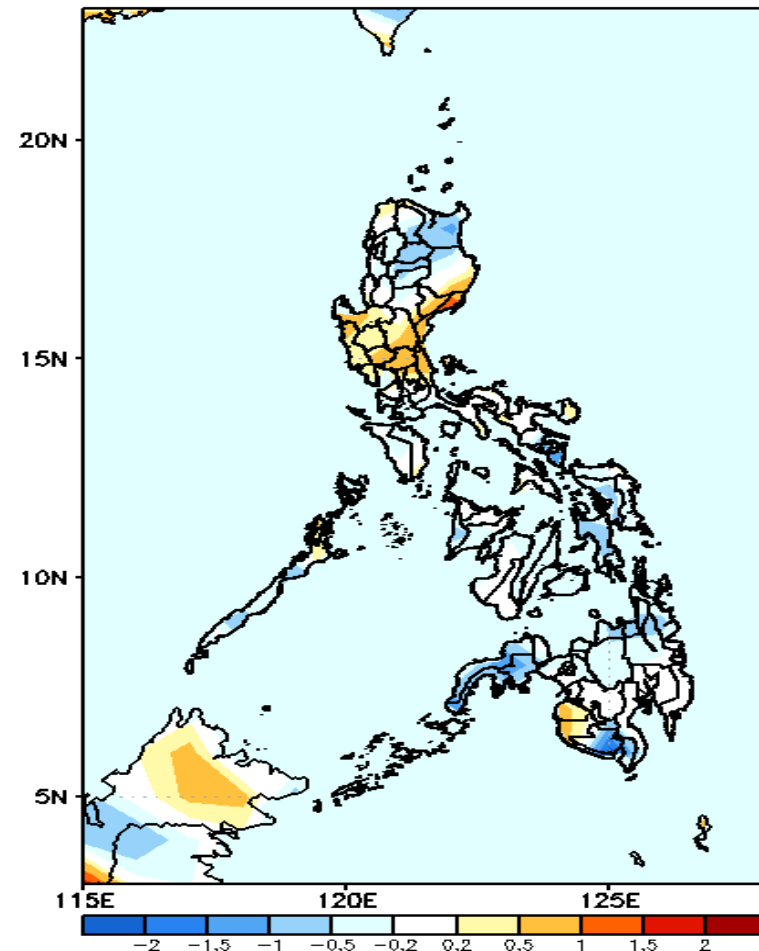
GEFS Week-1 T2m Anomaly
Valid: 20210908 - 20210914



2m Temperature Week 1: Sep 08-14, 2021

Average to slightly cooler than average surface air temperature will likely experience in most parts of the country except in northern Luzon, Eastern Visayas, Misamis Oriental and Maguindanao where slightly warmer to warmer temperature is expected.

GEFS Week-2 T2m Anomaly
Valid: 20210915 - 20210921



2m Temperature Week 2: Sep 15-21, 2021

Average to slightly cooler than average surface air temperature will likely experience in most parts of the country except in Central Luzon and Maguindanao where slightly warmer to warmer temperature is expected.